



US Army Corps of Engineers
BUILDING STRONG®

Ida Advisory #4

For Planning Purposes Only!

WASHINGTON, DC
08:40:38
27 Aug 2021

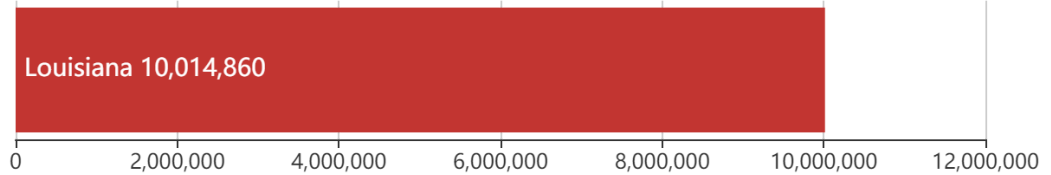
CHICAGO
07:40:38
27 Aug 2021

LOS ANGELES
05:40:38
27 Aug 2021

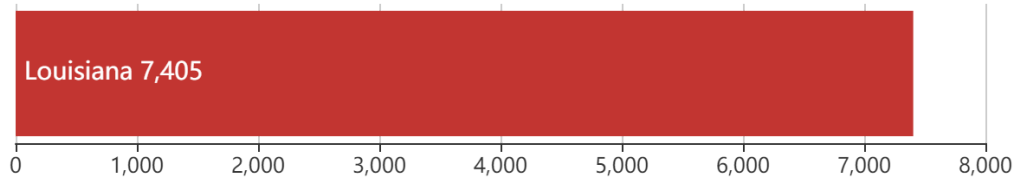
<https://go.usa.gov/xFugh>

Updated as of 27 Aug 2021 (7:40 AM Central Daylight Time)

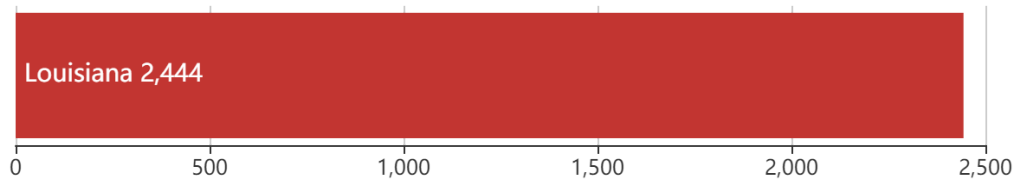
Debris



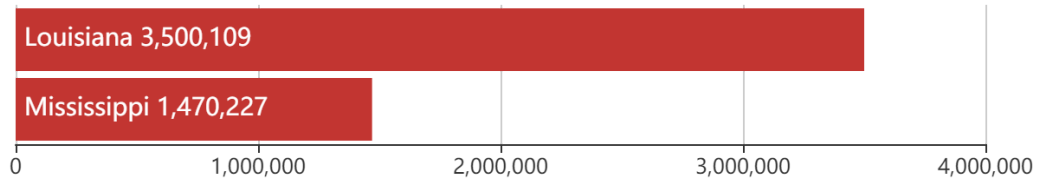
Est. Temp. Roofing



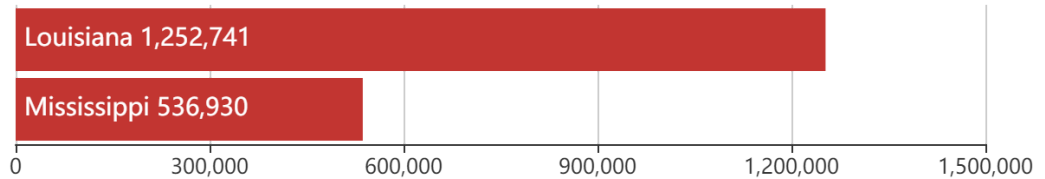
Act. Temp. Roofing



Population



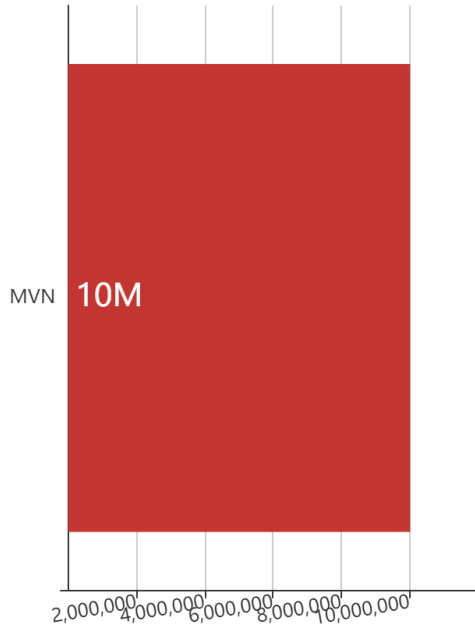
Households



Mission Model Summary

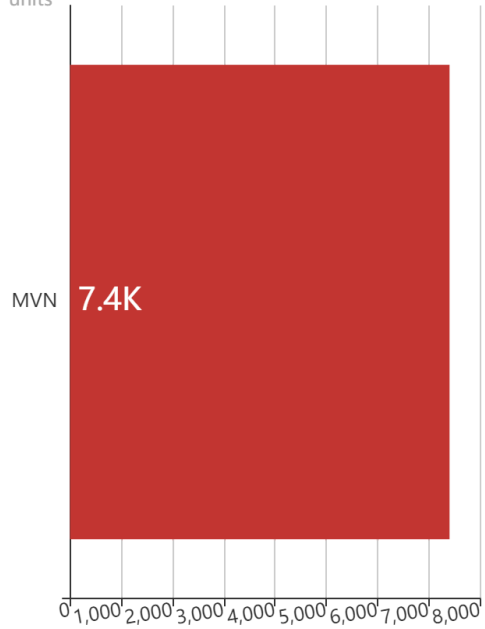
Debris By USACE District

cu. yd.

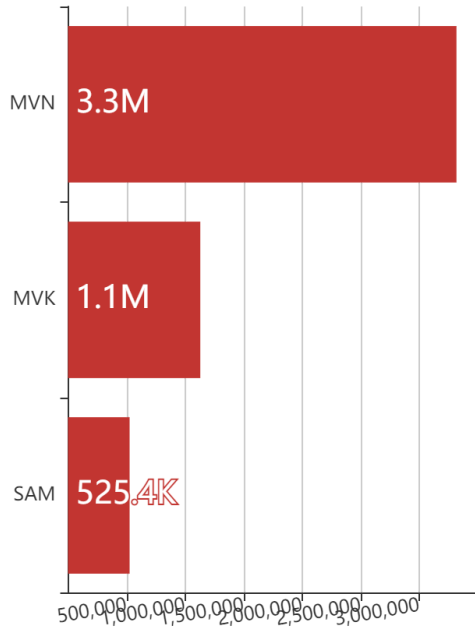


Est. Temp. Roofing By USACE District

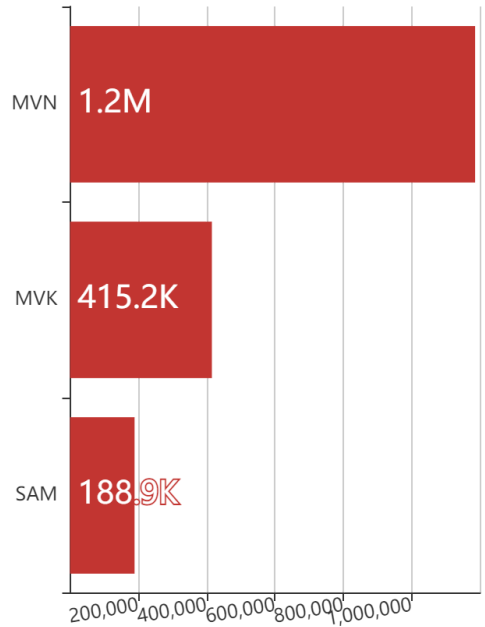
units



Population By USACE District



Households By USACE District



Critical Infrastructure Summary

Total

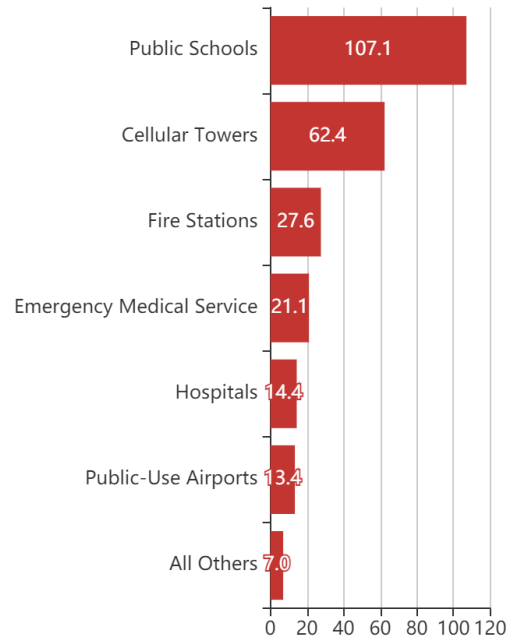


Power Requirements



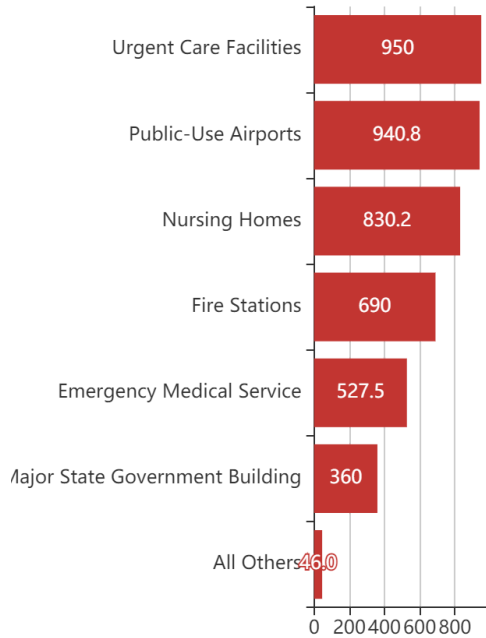
Generators

By Generator Count



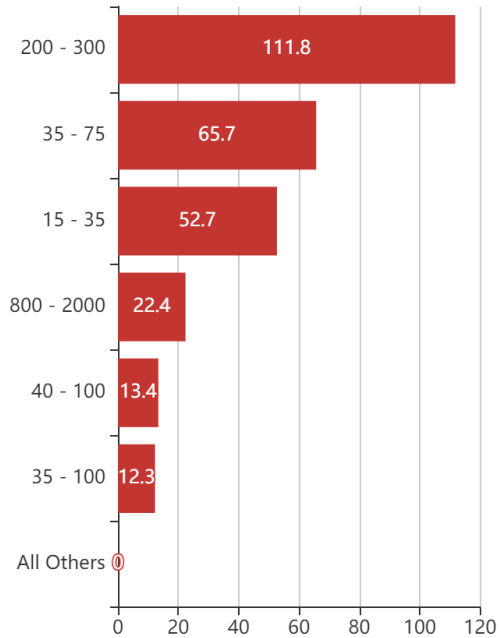
Generators

By Power Requirement



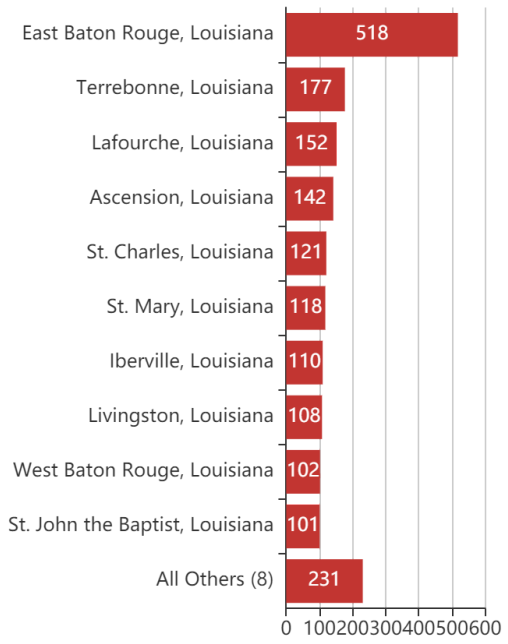
Generators

By Range



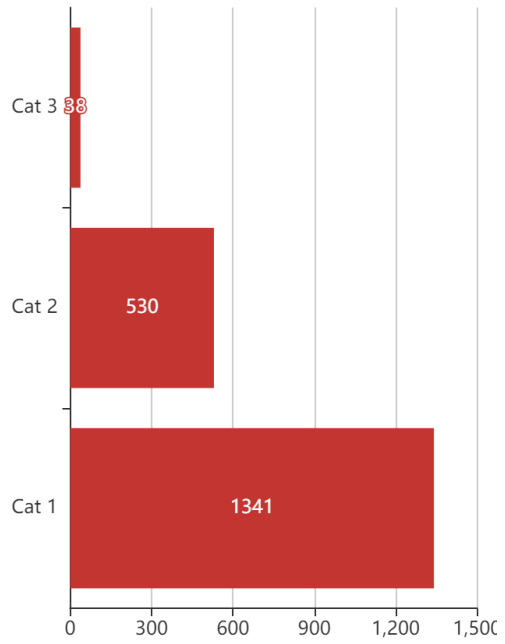
Structures

By County



Structures

By Intensity





Key Messages for Tropical Storm Ida

Advisory 4: 5:00 AM EDT Fri Aug 27, 2021



1. Tropical storm conditions are occurring in portions of the Cayman Islands, and they are expected in portions of western Cuba and the Isle of Youth today, where a dangerous storm surge is also possible in areas of onshore flow. Life-threatening heavy rains, flash flooding and mudslides are expected across Jamaica, the Cayman Islands, and western Cuba, including the Isle of Youth.

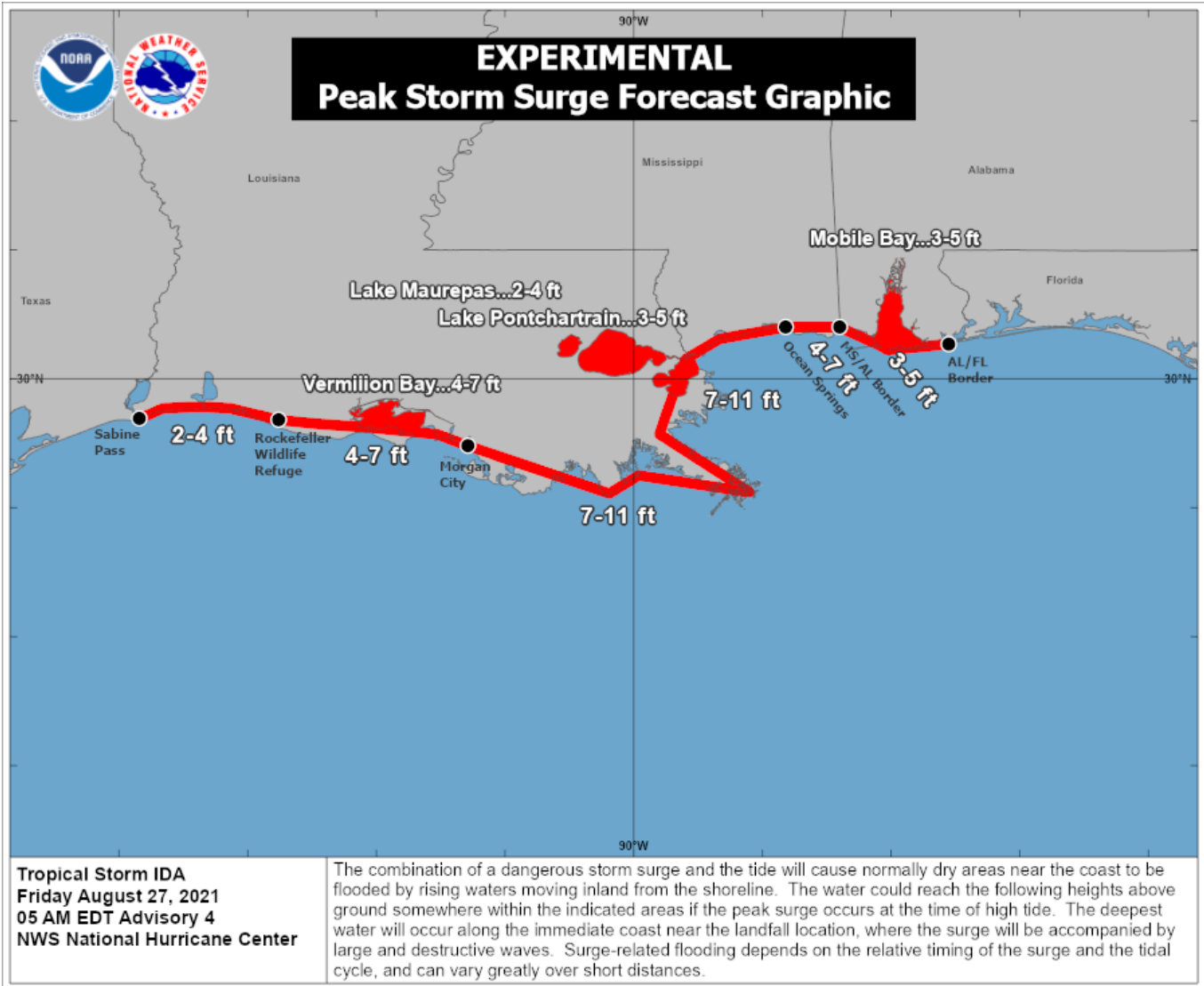
2. There is an increasing risk of life-threatening storm surge inundation along the coasts of Louisiana, Mississippi, and Alabama, where a Storm Surge Watch is in effect. Interests in these areas should follow any advice given by local officials.

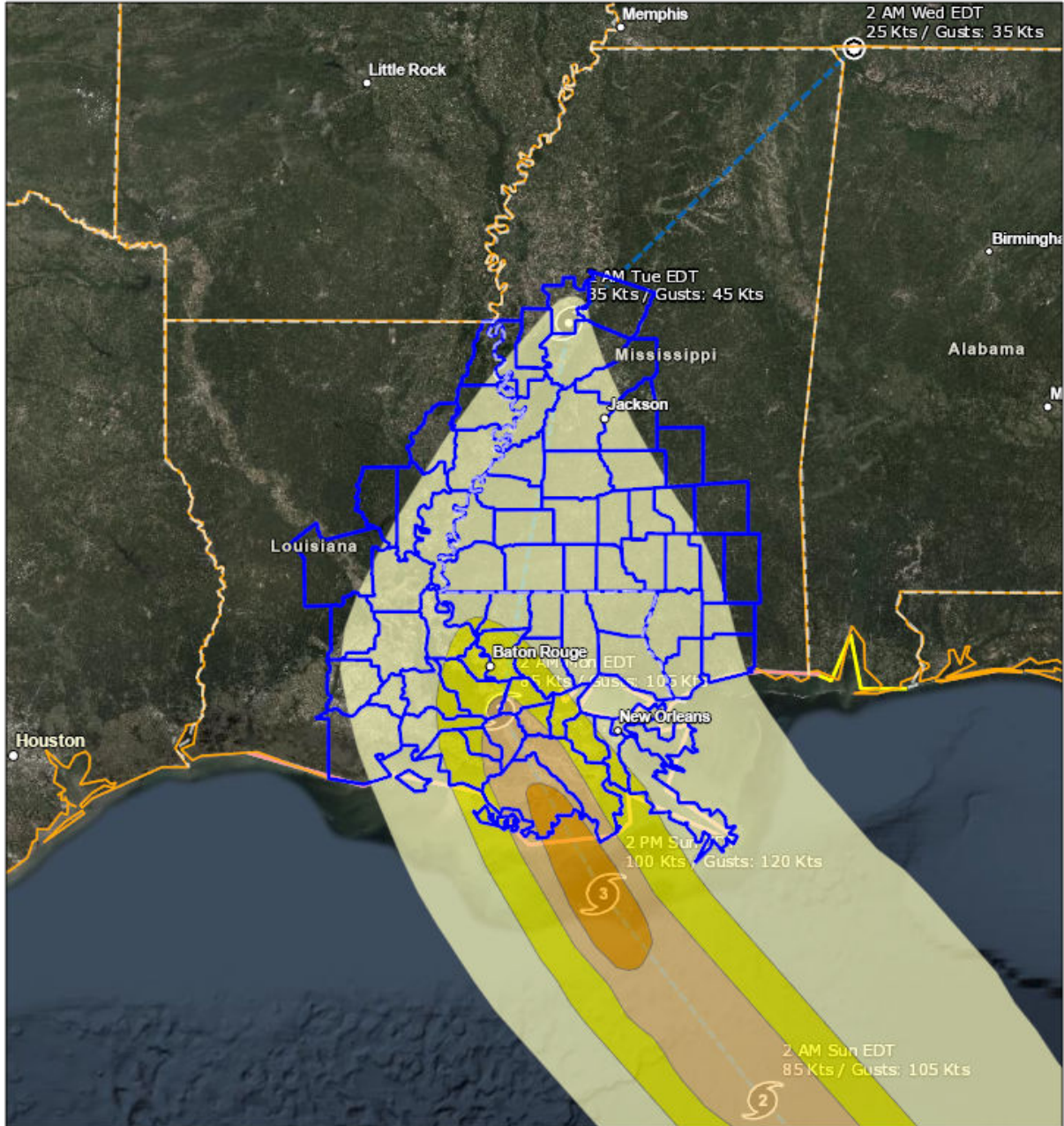
3. There is an increasing risk of dangerous hurricane-force winds beginning Sunday along the portions of the coasts of Louisiana and Mississippi, including metropolitan New Orleans, where a Hurricane Watch is in effect.

4. Ida is also expected to produce heavy rains across the central Gulf Coast from southeast Louisiana to coastal Mississippi, Alabama, as well as the Lower Mississippi Valley starting Sunday into Monday, resulting in considerable flash, urban, small stream, and riverine flooding.

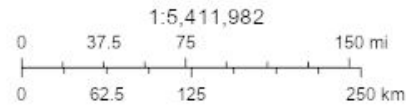


For more information go to hurricanes.gov





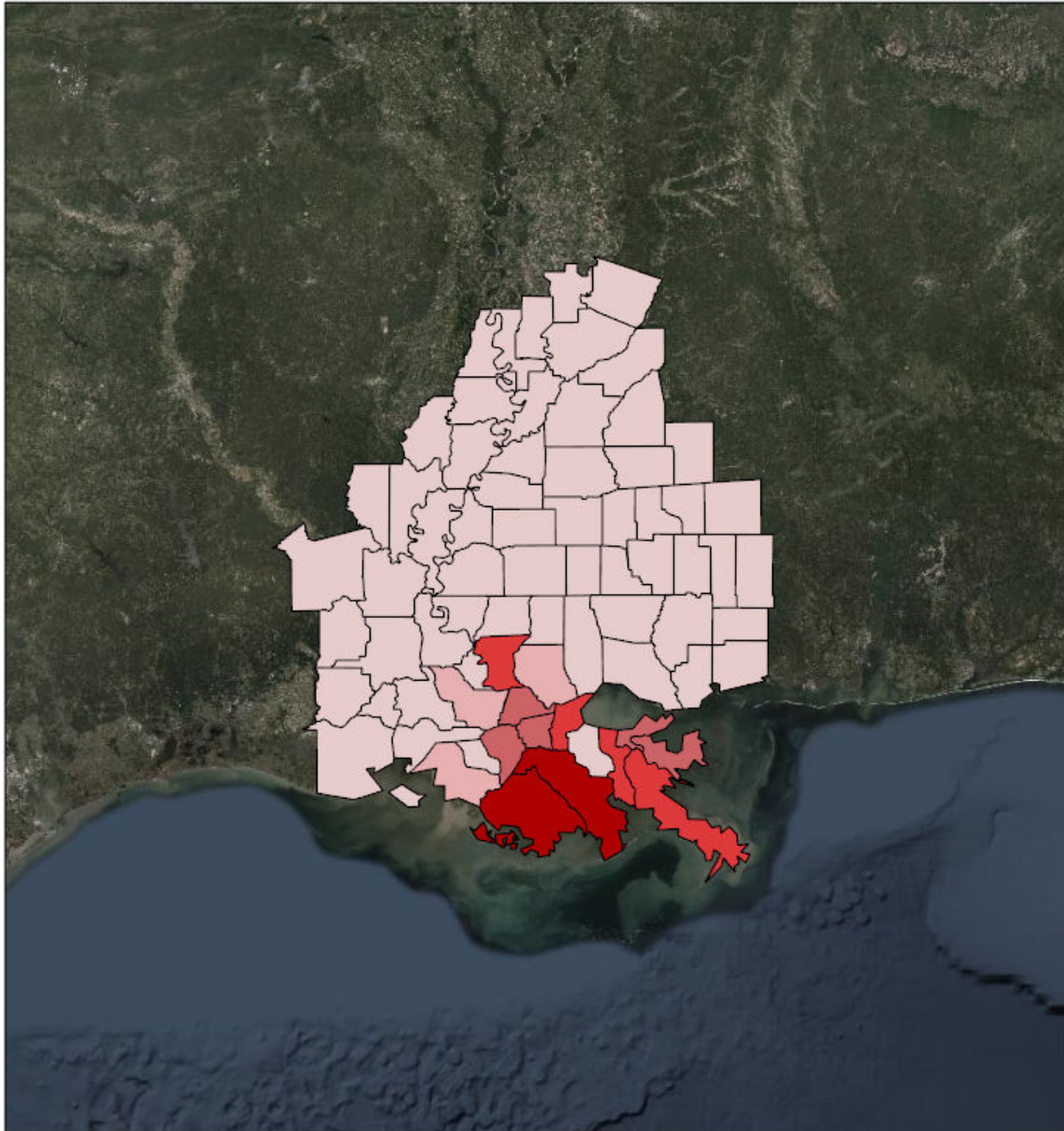
- Counties
- State Boundaries
- Mission Model Swaths
 - TS
 - Cat 1
 - Cat 2
 - Cat 3
- Tropical Cyclone Observed Surface Wind Swath
 - Observed (Best Track) Winds ≥ 34 knots (39 mph)
 - Observed (Best Track) Winds ≥ 50 knots (58 mph)
 - Observed (Best Track) Winds ≥ 64 knots (74 mph)
- Observed (Best Track) Track Line
- Observed (Best Track) Center Position






Source: NOAA, Esri, Esri, HERE, Garmin, FAO, NOAA, USGS, EPA, Source: Esri, DigitalGlobe, GeoEye, Earthstar Geographics, CNES/Airbus DS, USDA, USGS, AeroGRID, IGN, and the GIS User Community

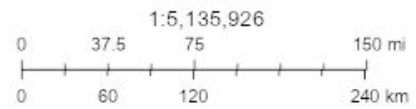
Created by SimSuite

Debris



Debris

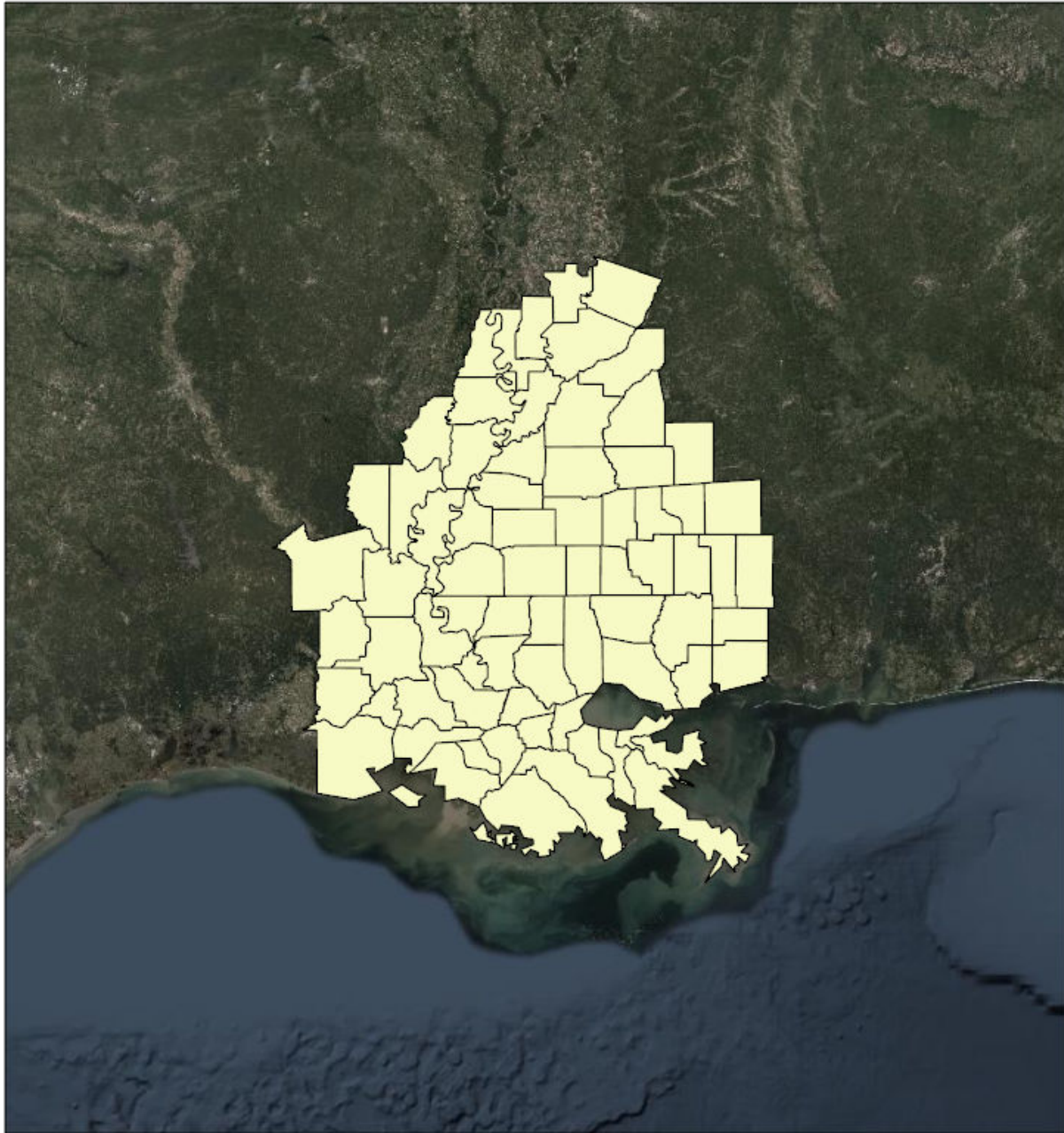
-  < 100,000 cubic yards
-  100,000 - 249,000 cubic yards
-  250,000 - 499,999 cubic yards
-  500,000 - 999,999 cubic yards



Source: Esri, DigitalGlobe, GeoEye, Earthstar Geographics, CNES/Airbus DS, USDA, USGS, AeroGRID, IGN, and the GIS User Community

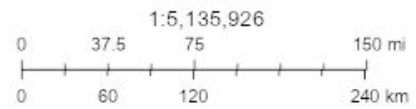
Created by SimSuite

Est. Temp. Roofing



Est. Temp. Roofing

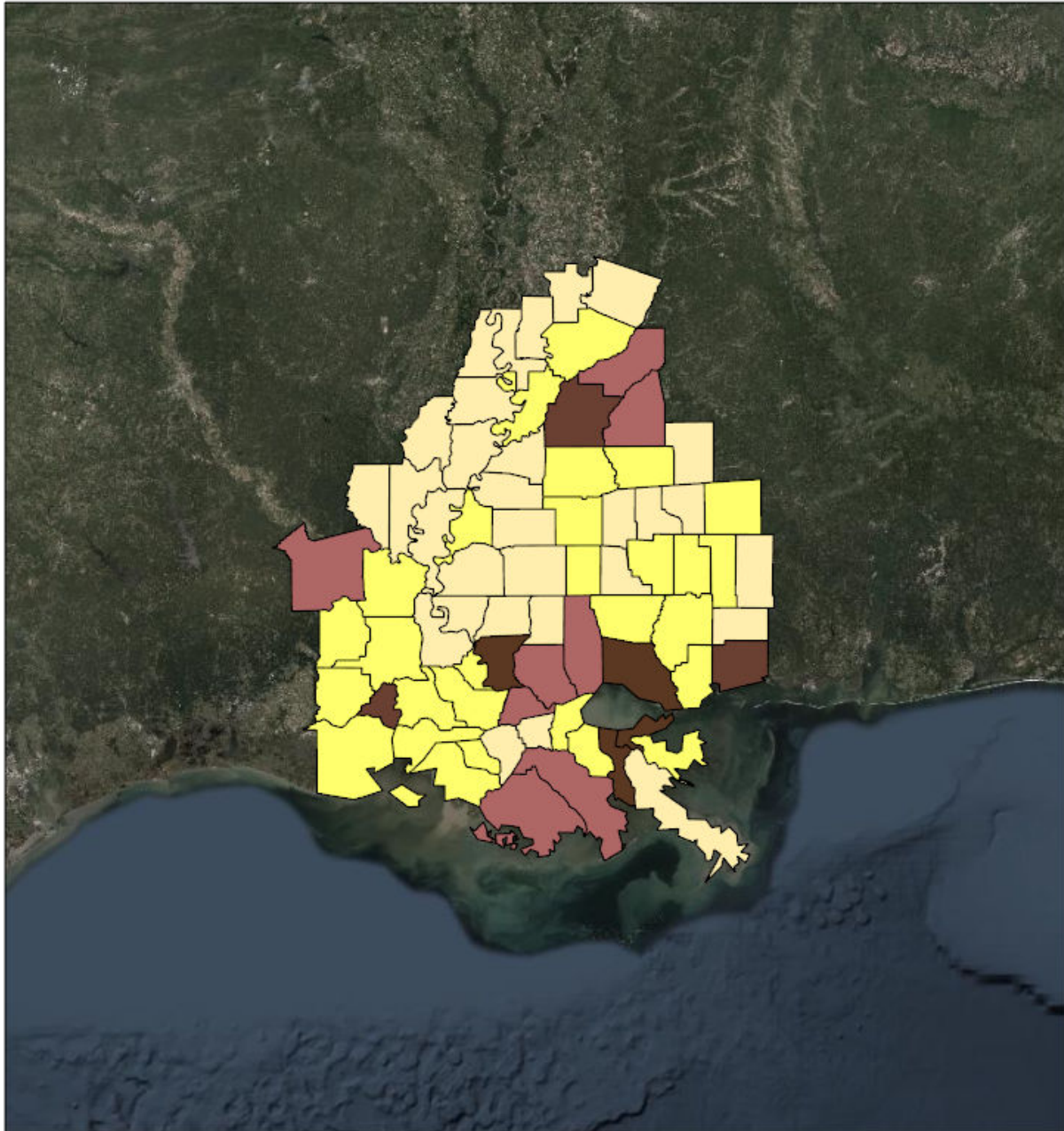
 < 2,000 units




Source: Esri, DigitalGlobe, GeoEye, Earthstar Geographics, CNES/Airbus DS, USDA, USGS, AeroGRID, IGN, and the GIS User Community

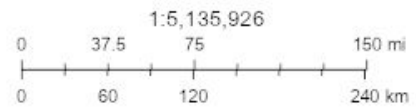
Created by SimSuite

Population



Population

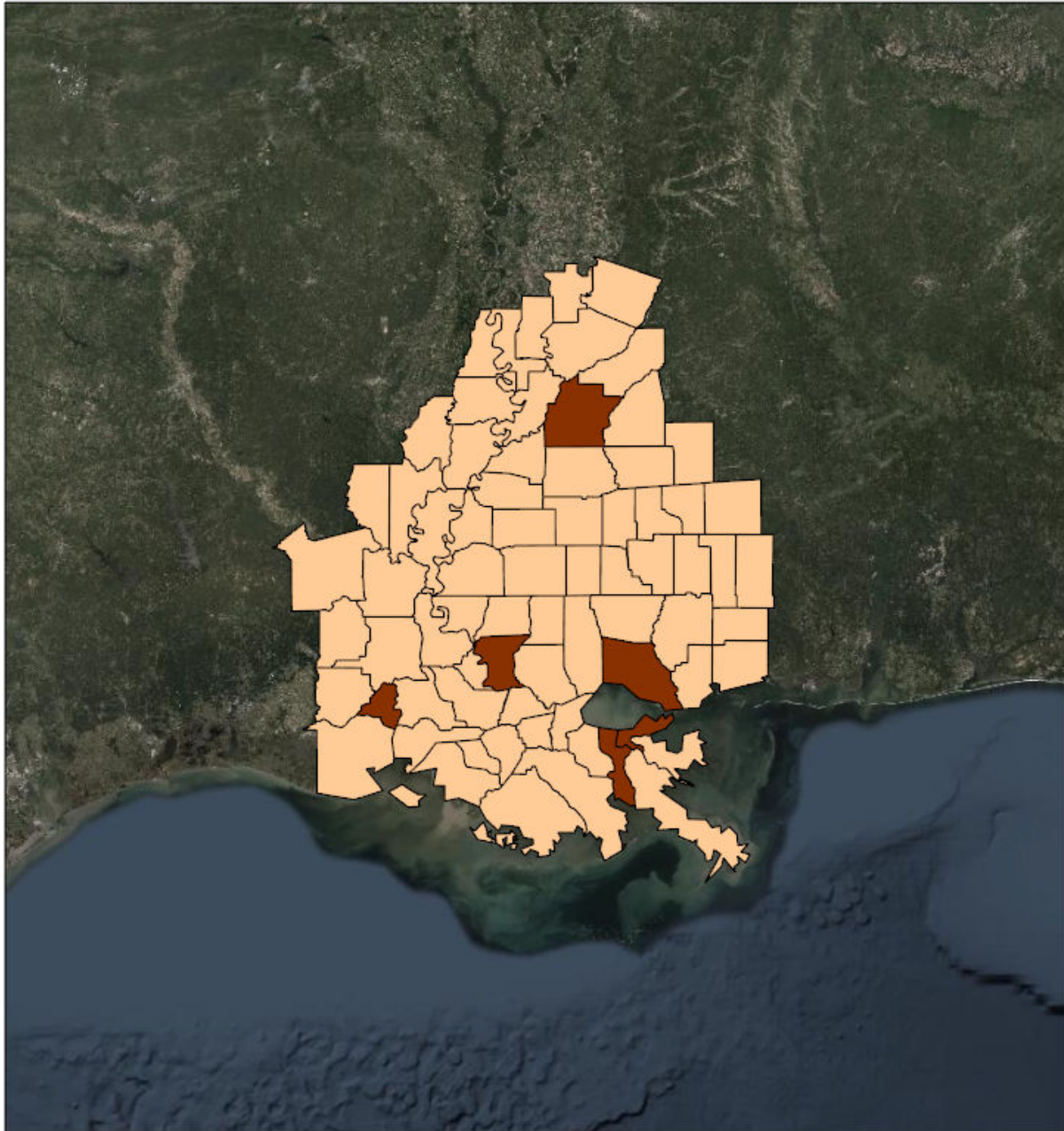
-  < 25,000 persons
-  25,000 - 99,000 persons
-  100,000 - 174,999 persons
-  175,000 - 249,000 persons



Source: Esri, DigitalGlobe, GeoEye, Earthstar Geographics, CNES/Airbus DS, USDA, USGS, AeroGRID, IGN, and the GIS User Community

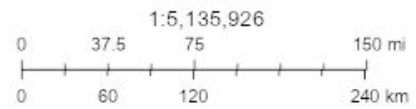
Created by SimSuite

Households



Households

- < 7,500 Households
- 15,000 - 24,999 Households
- 25,000 - 49,999 Households



Source: Esri, DigitalGlobe, GeoEye, Earthstar Geographics, CNES/Airbus DS, USDA, USGS, AeroGRID, IGN, and the GIS User Community

Created by SimSuite

Mission Summary



The mission models account for storm surge and wind damage only, but do not account for other related storm hazards that may affect the mission estimates.

Mission Summary	
Total Counties	72
Debris (cu. yd.)	10,014,860
Est. Temp. Roofing (units)	7,405
Act. Temp. Roofing (units)	2,444
Population	4,970,336
Households	1,789,671
Population Distribution	
Tropical Storm	2,914,750
Category 1	1,370,330
Category 2	219,069
Category 3	37,791

LOUISIANA	Yds of Debris (10,014,860)	Est. Roof Units (7,405)	Act. Roof Units (2,444)	Population (3,500,109)	Households (1,252,741)
Acadia	0	0	0	64,233	22,841
Ascension	336,486	524	173	124,274	37,790
Assumption	373,820	211	70	24,326	8,736
Avoyelles	0	0	0	43,493	15,432
Catahoula	0	0	0	10,384	3,834
Concordia	0	0	0	20,789	7,613
East Baton Rouge	872,329	1,789	590	455,183	172,057
East Carroll	0	0	0	7,690	2,552
East Feliciana	5,102	10	3	20,133	7,022
Evangeline	0	0	0	35,225	12,829
Franklin	0	0	0	21,409	7,904
Iberia	37,404	76	25	74,654	26,778
Iberville	158,862	127	42	34,675	11,072
Jefferson	860,110	1,764	582	436,044	169,647
La Salle	0	0	0	15,517	5,468
Lafayette	0	0	0	249,487	87,027
Lafourche	2,338,882	533	176	102,036	35,486
Livingston	233,255	478	158	142,761	46,007
Madison	0	0	0	11,737	4,025
Orleans	360,371	0	0	378,952	142,158
Plaquemines	593,781	7	2	24,106	8,077
Pointe Coupee	34,995	26	9	22,931	9,082
Rapides	0	0	0	138,904	50,401
St. Bernard	335,152	0	0	42,016	13,221
St. Charles	94,084	193	64	55,762	18,557
St. Helena	0	0	0	11,008	4,333
St. James	489,847	187	62	22,785	7,717
St. John the Baptist	566,598	135	44	46,127	15,965
St. Landry	0	0	0	85,834	31,857
St. Martin	36,179	74	24	55,795	19,216
St. Mary	129,415	220	73	54,463	20,457
St. Tammany	0	0	0	259,212	87,521
Tangipahoa	0	0	0	133,414	45,135
Tensas	0	0	0	5,076	2,172
Terrebonne	2,111,886	954	315	116,998	40,091
Vermilion	0	0	0	61,784	21,889
Washington	0	0	0	48,152	18,113
West Baton Rouge	44,048	90	30	26,881	8,688
West Feliciana	2,255	5	2	15,859	3,971

MISSISSIPPI	Yds of Debris (0)	Est. Roof Units (0)	Act. Roof Units (0)	Population (1,470,227)	Households (536,930)
Adams	0	0	0	31,160	12,643
Amite	0	0	0	12,545	5,351
Claiborne	0	0	0	9,331	3,440
Copiah	0	0	0	29,484	10,708
Covington	0	0	0	20,137	7,430
Forrest	0	0	0	75,662	28,746
Franklin	0	0	0	8,081	3,211
Hancock	0	0	0	48,810	17,380
Harrison	0	0	0	205,027	71,476
Hinds	0	0	0	243,165	91,351
Holmes	0	0	0	18,437	6,926
Humphreys	0	0	0	8,556	3,373
Issaquena	0	0	0	1,325	472
Jefferson	0	0	0	7,644	2,929
Jefferson Davis	0	0	0	11,776	4,977
Jones	0	0	0	69,444	25,247
Lamar	0	0	0	58,929	21,542
Lawrence	0	0	0	13,333	5,078
Lincoln	0	0	0	35,319	13,296
Madison	0	0	0	107,968	35,829
Marion	0	0	0	26,158	10,135
Pearl River	0	0	0	56,827	20,816
Perry	0	0	0	12,551	4,674
Pike	0	0	0	40,438	15,370
Rankin	0	0	0	150,867	52,836
Sharkey	0	0	0	4,786	1,834
Simpson	0	0	0	27,769	10,330
Smith	0	0	0	16,696	6,221
Stone	0	0	0	18,163	6,165
Walthall	0	0	0	14,801	5,888
Warren	0	0	0	48,277	18,941
Wilkinson	0	0	0	9,239	3,455
Yazoo	0	0	0	27,522	8,860

Critical Infrastructure

Summary			
Total Critical Facilities		1,909	
Power Requirements (kW)		68,949.6	
Range (kW)			
Communications	# FED Gen Req	Range (kW)	Req kW
AM Antennas (19)	1.0	35 - 75	52.3
Cellular Towers (104)	62.4	35 - 75	3,432.0
FM Antennas (45)	2.3	35 - 75	123.8
Education	# FED Gen Req	Range (kW)	Req kW
Private Schools (95)	0.0	200 - 300	0.0
Public Schools (357)	107.1	200 - 300	26,775.0
Colleges and Universities (44)	0.9	200 - 300	220.0
Emergency Services	# FED Gen Req	Range (kW)	Req kW
911 Call Centers (0)	0.0	15 - 35	0.0
Emergency Medical Service (211)	21.1	15 - 35	527.5
Fire Stations (276)	27.6	15 - 35	690.0
Service Providers (0)	0.0	0 - 0	0.0
Healthcare	# FED Gen Req	Range (kW)	Req kW
Nursing Homes (82)	12.3	35 - 100	830.2
Hospitals (48)	14.4	800 - 2000	20,160.0
Urgent Care Facilities (19)	3.8	200 - 300	950.0
Military	# FED Gen Req	Range (kW)	Req kW
Air National Guard (ANG) Sites (0)	0.0	15 - 35	0.0
Army National Guard (ARNG) Sites (12)	0.0	15 - 35	0.0
National Security Government Military Facilities (78)	0.0	15 - 35	0.0
Law Enforcement	# FED Gen Req	Range (kW)	Req kW
Prison Points (25)	5.0	400 - 600	2,500.0
Local Police (36)	3.6	15 - 35	90.0
State Police (4)	0.2	15 - 35	5.0
Correctional Facilities (0)	0.0	400 - 600	0.0
State and Local EOC	# FED Gen Req	Range (kW)	Req kW
Local Emergency Operations Centers (16)	3.2	15 - 40	88.0
State Emergency Operation Centers (EOCs) (1)	0.2	15 - 35	5.0

State Facilities	# FED Gen Req	Range (kW)	Req kW
Governors Mansion (1)	0.0	100 - 200	0.0
Major State Government Building (24)	2.4	100 - 200	360.0

Transportation	# FED Gen Req	Range (kW)	Req kW
Ports (238)	0.0	600 - 1200	0.0
Amtrak Stations (2)	0.0	100 - 300	0.0
Bus Stations (32)	0.0	100 - 300	0.0
Intermodal Terminal Facilities (7)	0.0	100 - 300	0.0
Railroad Stations (1)	0.0	100 - 300	0.0
Public-Use Airports (112)	13.4	40 - 100	940.8

Water	# FED Gen Req	Range (kW)	Req kW
Water Treatment Facilities (0)	0.0	800 - 2000	0.0
Wastewater Treatment Plants (20)	8.0	800 - 2000	11,200.0

COVID-19

#	County	Cases
1	Jefferson	64,561
2	East Baton Rouge	57,766
3	Orleans	42,857
4	St. Tammany	39,229
5	Lafayette	34,529
6	Harrison	28,104
7	Hinds	28,101
8	Livingston	22,070
9	Tangipahoa	20,767
10	Ascension	19,762
11	Rankin	19,126
12	Rapides	18,313
13	Terrebonne	17,393
14	Lafourche	16,137
15	Madison	12,793
16	St. Landry	12,258
17	Forrest	11,682
18	Jones	11,542
19	Iberia	11,040
20	Acadia	9,249
21	Lamar	9,181
22	Vermilion	8,712
23	St. Charles	8,207
24	St. Mary	7,702
25	St. Martin	7,560
26	Pearl River	7,218
27	Washington	6,877
28	St. Bernard	6,260
29	Hancock	6,160
30	Avoyelles	6,131
31	Warren	5,797
32	St. John the Baptist	5,723
33	Iberville	5,416
34	Evangeline	4,938
35	Pike	4,660
36	Lincoln	4,658
37	East Feliciana	4,212
38	West Baton Rouge	4,115
39	Adams	3,910

40	Yazoo	3,857
41	Simpson	3,775
42	Copiah	3,773
43	Covington	3,670
44	Franklin	3,651
45	Marion	3,545
46	Plaquemines	3,519
47	Pointe Coupee	3,498
48	Assumption	3,304
49	Stone	3,062
50	St. James	2,993
51	Concordia	2,769
52	Holmes	2,329
53	LaSalle	2,290
54	Smith	2,212
55	Madison	1,869
56	Lawrence	1,809
57	Walthall	1,789
58	Amite	1,683
59	Perry	1,680
60	Catahoula	1,547
61	Jefferson Davis	1,483
62	West Feliciana	1,403
63	East Carroll	1,381
64	St. Helena	1,219
65	Claiborne	1,181
66	Humphreys	1,118
67	Franklin	1,009
68	Wilkinson	908
69	Jefferson	811
70	Sharkey	570
71	Tensas	429
72	Issaquena	184